

ALFLUO Basic

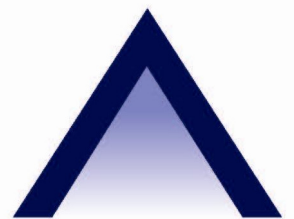
The ALFLUO Basic tube light fixture is a dust and water tight fixture for fluorescent tubes. The fixture is produced with high-quality material: an ABS body, a PMMA cover, screwed cable glands and stainless steel clips and hanging brackets. The ALFLUO Basic uses a high frequency electronic ballast. This fixture is dimmable from 100% to 1%.

- **HIGH-QUALITY MATERIAL**
- **HIGH FREQUENT**
- **DIMMABLE FROM 100% - 1%**

The ALFLUO Basic is available in a 1 x 18 Watt or 1 x 36 Watt version. Installation of the ALFLUO Basic, is easy due to the flexibility in mounting possibilities. The fixtures can be installed individually or in series and ensure you of excellent flexibility.



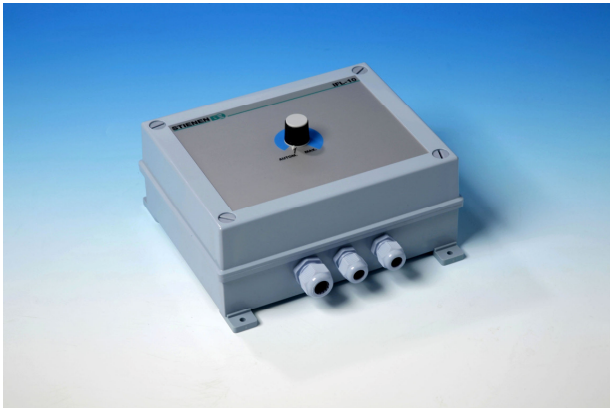
AGRILIGHT



Bright by nature

The ALFLUO Basic fixtures can be managed pre-eminently by connecting them to a poultry computer using a 0-10 V signal.

Agrilight® offers the IFL-10 designed specifically to amplify the operating signal of the climate computer. By using a galvanic separator, the light will be dimmed by a stable and clear signal. Hereby you are ensured of an optimal operation of the dimming function.



We would be pleased to design an optimal lighting plan for your barn. Please fill in a demand for lighting plan, which can be downloaded on our website, and we will show you all the possibilities for your barn.

For more information please contact your certified installer or Agrilight b.v.

AGRILIGHT



Bright by nature

Agrilight b.v.

Vlotlaan 560

2681 TX Monster

Nederland

Tel. +31 (0)174 287 287

Fax +31 (0)174 287 292

E-mail: info@agrilight.nl

WWW.AGRILIGHT.NL

Technical data ALFLUO Basic	
Lamp type	TL
Lamp colour	627 [warm white] 827 [warm white] 640 [clear white] 840 [clear white]
Life span lamp	10.000 hours <i>This is an average lifetime and can be influenced by a number of factors.</i>
Ballast	Electronic HF Ballast
IP Class	IP65
Mains voltage / Frequency	220 – 240 V / 50 – 60 Hz: Between 202 and 254 V constant light stream, independent on mains voltage. <i>The conditions for other voltages and frequencies are available on request.</i>
Current	18W: 0.08 A / 36W: 0.16 A
Bulb power	18 W / 36 W (lamp)
Power factor (indicative)	>0,95