



User Guide and Assembly Instructions ORION armature

Type: ORAMBL - ORAMGR - ORAMRO - ORAMW1827 - ORAMW1840



AGRILIGHT b.v.
Vlotlaan 560,
2681 TX Monster
Nederland

Tel: +31 (0)174.287.287

Fax: +31 (0)174.287.292

Internet: www.agrilight.nl

E-mail: info@agrilight.nl



Dear Client

Firstly, we wish to thank you for choosing a product by Agrilight B.V. The Orion armatures are intended for lighting poultry enclosures according to the requirements and specifications of modern industry. The armatures have been developed as a result of extensive research and are designed and constructed according to the very latest technology.

These instructions provide the necessary information for handling and installing the armatures safely and correctly.

We therefore recommend that you read the instructions carefully and keep them in a safe place.

In the event of doubt, please do not hesitate to contact your service technician or Agrilight B.V. for additional information.

Application

Orion armatures are applied in egg-laying houses, hen-houses, runs for raising young chicks and turkey enclosures.

Installation

It is important to note that the armatures should be installed by a certified technician. If this is not done, this will render the product warranty invalid.

In compliance with the instructions for installation laid down by Agrilight B.V., all generally and locally applicable building and construction regulations should be respected and complied with.

Service Parts

To ensure proper operation of the unit, only use Agrilight B.V. components or components of the same quality.

CE certification



With reference to the conformance certificate for the Orion armatures, the CE mark on the type label of the Orion armatures indicates that the product is in full compliance with EU consumer safety, health and environmental requirements.

Intended use

The Orion armatures are intended for lighting poultry enclosures. Any other use is not in compliance with the intended use. Agrilight B.V. accepts no liability for damage or injury resulting from any use of the armatures other than their intended use, i.e. for which the armatures were developed and designed.

For your safety. Caution!

Agrilight B.V. attaches the utmost importance to the fact that the Orion armatures are used and maintained in a manner that ensures the safety of the user.

Please follow the instructions below in order to ensure the safe and reliable operation of the armatures:

1. Always read the user and instruction manual of the armatures before installing.
2. Ensure that the persons responsible for installing and mounting/connecting the armatures are familiar with the instructions and all other relevant information contained in the manuals before installing.

Please ensure before installing that all instructions are fully understood. This is the responsibility of the certified technician who installs the equipment.



230V AC Power supply

Components in the armatures are connected to a power supply of 230V.



Safety instructions

Always follow and comply with the safety instructions of this manual. If the safety instructions and warnings are not complied with, this may damage the installation and/or lead to serious personal injury or death.

EU Declaration of Conformity:

Manufacturer: Agrilight b.v.

Address: Vlotlaan 560, 2681 TX Monster, Netherlands

Hereby certifies that the:

Agrilight B.V. Orion armatures, incl. Orion-adaptor and PL lights with type designation:

ORAMBL / AORAMGR / AORAMRO / AORAMW1827 / AORAMW1840

comply with the provisions and regulations laid down in directive: EN60598-1: 2008

Monster, 2009 Agrilight b.v.

We retain the right to make amendments to the text, drawings and diagrams without any prior notification.

Unpacking and Inspecting

- Carefully unpack the Orion packaging.
- Inspect the contents of the packaging for any damage that may have occurred during transport.
- In the event of damage, contact Agrilight B.V. immediately, with reference to the packaging documents. You are advised to discontinue the installation of the armatures in the event of damage, even if the damage in question appears to be superficial or minor. In the event of damage, please consult Agrilight B.V. first, before you consider installing the armatures.

Introduction

Orion armatures are provided with blue, green, red or white compact 11W PL lights. Each colour has its own specific application and production performance without having any adverse effect on the animals.

Poultry

- A combination of green/blue PL lighting is generally used for meat chicks in order to stimulate growth.
 - Green lighting for young poultry.
 - Blue lighting for older poultry.
- A combination of red/white PL lighting is generally used for egg-laying hens. Red lighting gives good results with regard to fertility and for the prevention of feather-picking and cannibalism.

Dimmers

Orion armatures can be connected to 2 types of dimmer.


- An electronic dimmer for 80 armatures.
- An electromagnetic dimmer for 60 armatures.

For additional information relating to available options that can be applied in your enclosures please contact Agrilight B.V.

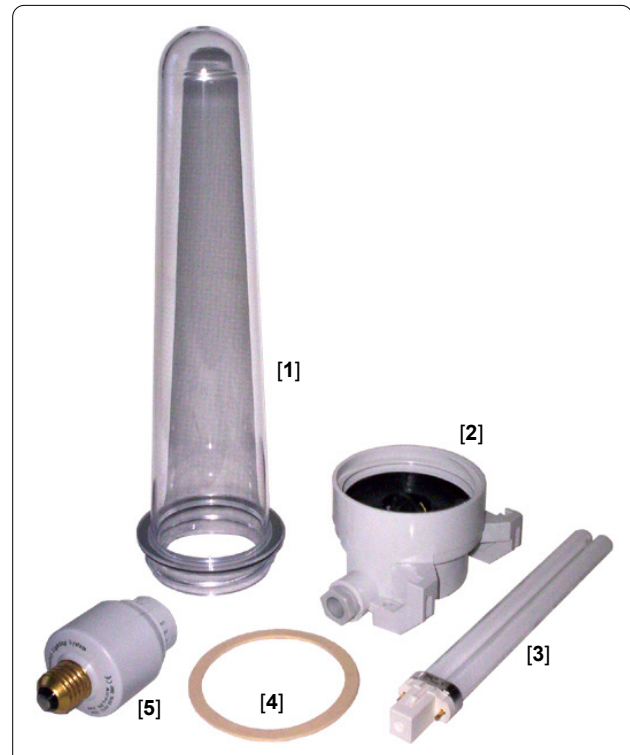
Technical data

Orion adaptor

The Orion adaptor can be used for PL lights of 5-11W, 10/13W and 18W.

5W	= 250lm = 2.5W	
7W	= 400lm = 4.0W	
9W	= 600lm = 6.0W	
10W	= 600lm = 6.0W	
11W	= 900lm = 7.5W	
13W	= 900lm = 7.5W	
18W	= 1200lm = 10.0W	


Scope of delivery




No.	Quantity	Description
[1]	1	Transparent cover
[2]	1	3-way mountable armature for mounting to wall or ceiling in three different mounting positions.
[3]	1	PL light (in the colours: white, red, green or blue)
[4]	1	Sealing ring
[5]	1	Orion adaptor

Specifications	
Light type	PL light, 2 pins
Light colour	Blue (ORAMBL), Green (ORAMGR), Red (ORAMRO), White (ORAMW1827 / ORAMW1840)
Lifecycle of light	6.000 - 8.000 hrs (This is an average lifecycle and depends on a number of factors)
Lifecycle of adaptor	+/- 30.000 hrs
Dimming capacity	40% (electronic dimmer) - 30% (electromagnetic dimmer)
Degree of protection	IP54
Voltage/Frequency	220-240V / 50-60Hz (other voltages and frequencies are available on request)
Power supply	0.067 A
Power capacity	11 W
Power factor (indicative)	0.7

Installation



If the following instructions and safety warnings are not complied with, this may result in death or serious personal injury and damage to the equipment.



- The armatures may only be installed by a certified technician.
- Always block off any traffic in the vicinity where the armatures are being installed before commencing with any work on the installation.
- Always disconnect the Orion armatures from the mains supply before commencing with work on the system. Ensure that the power supply is not turned on accidentally.
- Keep the direct vicinity free from animals and any internal transport whilst carrying out installation activities.
- Only use insulated tools!

- Ensure that you do not confuse the phase, earth and null connections when connecting - this may result in life-threatening situations!
- Always consult the connecting diagrams of the control cabinet(s) when connecting up and wiring the armatures. Always ensure that you comply with the legally applicable connecting requirements (e.g. NEN 1010 for the Netherlands).

The lighting plan shows the conditions that must be taken into account when installing. These instructions must be fully complied with in order to ensure uniformity and a proper lighting level.

IP-rating [ingress protection]

The 3-way mountable armature in combination with the protective cover is IP54 rated, thus ensuring a solid and damp-tight construction.

Mounting

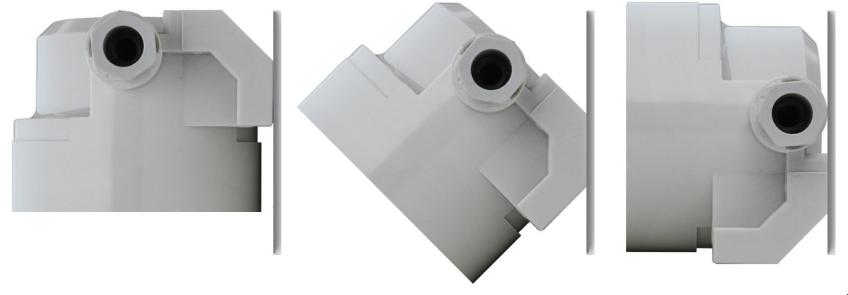


Disconnect all power supply and ensure that the power supply cannot be switched on accidentally. Agrilight B.V. cannot be held liable for damage and/or injury resulting from improper mounting and installation.

Mounting the armature



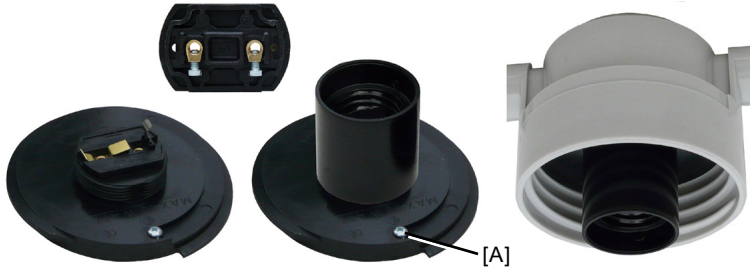
The 3-way mountable armature can be mounted in three different positions on walls and ceilings (0° / 45° / 90°). This enables optimal lighting in any enclosure at all times.



1. Remove the fitting from the armature.
2. Mount the 3-way mountable armature the wall or ceiling.



CAUTION! Always connect the wiring before mounting and inserting the fitting. Afterwards, the fitting can no longer be dismantled!



3. Lead the wiring through the feed-through glands of the armature, connect these to the armature, mount the fitting, screw the fitting into the armature and tighten the fitting with screw [A].



4. Place the sealing ring around the transparent cover.



5. Screw the Orion adaptor into the fitting.



6. Press the PL light into position in the adaptor clamps.



7. Screw the transparent cover to the armature.

Maintenance



Always disconnect the Orion armatures from the mains supply before commencing with work on the system!

Contamination can have an adverse effect the lifecycle of the Orion system. In order to retain the required amount of lighting, you are advised to check the condition of the control cabinet(s), armatures and PL lights regularly and to clean the plastic covers with a damp cloth.

Agrilight B.V. recommends that you have your Orion system serviced once a year by a certified technician to test operation and to check all fixtures and connections.

Malfunctions



When checking malfunctions, be aware of the risk of electrically live components. Although the armatures are designed with safety in mind and are earthed, hazards due to malfunctions can never be ruled out. Only certified technicians are permitted to handle the electrical installation or to perform measurements on the unit.

The Orion system no longer functions:

Check for presence of power supply:

- Ensure that there is a power supply available;
- Check the wiring in the control cabinet(s);
- Check all fuses;
- Check your computer settings (if computer-control is used);
- Check and/or replace any defective light(s).

Checking end of the lifecycle of lights:

- The light flickers on and off;
- The end of the light turns black;
- The glass of the lights turns brown;

If the light doesn't work: replace the light as quickly as possible or disconnect the armature and fitting.

Replacing lights



The correct light must always be used in the armature. This is to prevent damage to the lights. For the correct light, please refer to page 2 of the technical datasheet.

Leave the light to cool down for at least 30 minutes before removing. Caution! Recently used lights can be extremely hot and may cause serious burns.



To ensure safety, before removing and replacing lights, please ensure that the armature is disconnected from the power mains. In the event of a malfunction, never touch the armatures whilst the power supply is still connected or if the armature is damaged or wet.

Carefully pull the light out of the adaptor clamps in the armature "in a straight line" and then press the new light into the clamps of the adaptor.

If the light does not yet work:

- Check wiring;
- Remove the adaptor.



CONDITIONS OF WARRANTY

1. If it appears that your product does not function well, even though you have used it in the correct manner and in accordance with the written user manual and assembly instructions, the product will be replaced free of charge within a period of one year after purchase. In order to claim this warranty the customer must submit the product invoice to Agrilight BV with the 1 year warranty period.
2. The product must be returned to Agrilight BV within 30 days following the occurrence of the defect or malfunction for the purpose of verification.
3. The product must be provided with a project name and sent to the following address:
Agrilight b.v.
t.a.v. Serviceafdeling
Vlotlaan 412
2681 TV Monster - NL
4. When Agrilight bv sends the replacement parts you will receive an invoice that will be credited to your account when and if it can be verified that the malfunction of defect falls under the warranty.
5. If Agrilight BV has not received the defective product by return mail within 30 days of the invoice date, the warranty invoice will be treated as a sales invoice after which period the invoiced amount must be paid to Agrilight BV within 30 days.
6. The warranty does not cover the following situations for which the customer will be invoiced during the warranty period:
 - a. defects or damage resulting from fire, earthquakes, floods, lightning strikes, other natural disasters, as well as environmental pollution and problems related to power supply.
 - b. Defects resulting from sand, mud, dirt etc. entering the cabinet of the product.
 - c. Defects resulting from transport, accidents, shock and vibrations etc. following the purchase from and delivery of the product by Agrilight BV.
 - d. Defects resulting from negligence, carelessness or incorrect storage, improper maintenance etc.
 - e. Defects resulting from improper use (such as the use of the unit for purposes not listed in the user manual and/or assembly instructions etc.).
 - f. Defects resulting from (uncertified) repairs and modifications.
 - g. If the invoice cannot be submitted together with the product when warranty claims are made.
 - h. If changes have been made to the original purchase invoice or to the customer name on the invoice.
7. The liability on the part of Agrilight BV is restricted to the scope of this warranty and only includes the replacement and/or repair of the product. Agrilight BV accepts no liability for damages incurred directly or indirectly as a result of any defects in the product. Agrilight BV is not liable for expenses incurred as a result of disassembly and assembly/mounting, or expenses incurred as a result of travel and accommodation.
8. Any damage resulting from transport or incomplete delivery must be reported to Agrilight BV within 5 working days. Any notifications received by Agrilight BV beyond this period do not fall within the scope of the warranty or warranty period.

LIABILITY

Agrilight BV states emphatically that it cannot be held liable for damages of any kind or magnitude, caused by non-compliance with the instruction in this manual or as a result of the non-compliance with the connecting and installing requirements according to NEN 1010. We also refer to our terms and conditions of delivery according to the conditions and requirements laid down by the Netherlands Metal Association and any additional warranty provisions of Agrilight BV.
All technical modifications reserved.